

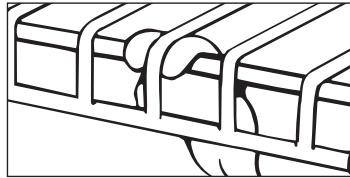
## Part Chart Pieces Needed

Shelf Length		4' 1.2m	6' 1.8m	8' 2.4m	12' 3.7m
Wall to Wall	Pared a pared	1	1	2	3
Wall to Open	Pared a borde	2	2	3	4
Open to Open	Borde a borde	3	3	4	5

1

Use one bracket 2-3" from each end of shelf and one every 36" in between. Position support bracket on shelf as shown.

Coloque un soporte entre 5 cm y 7,6 cm desde cada extremo de la repisa y a cada 91,4 cm entre medio. Ponga el soporte en la repisa tal como se muestra.

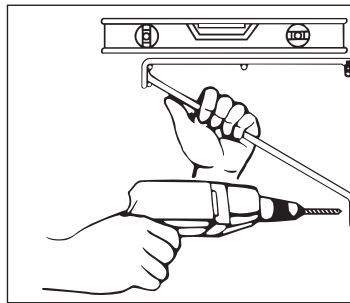


16" (40,6 cm)  
SuperSlide®

2

Level shelf. Drill 1/4" hole through wall using support bracket as guide. DO NOT PUNCH HOLES.

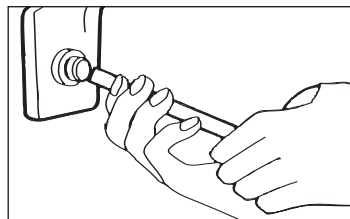
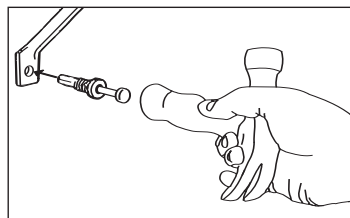
Nivele la repisa. Perfore un agujero de 6 mm a través de la pared usando el soporte como guía. USE TALADRO SOLAMENTE.



3

Push preloaded anchor through support bracket and into drilled hole. Use bottom of hammer handle to push in pin. For removal, pry pin out with screwdriver.

Empuje el tarugo precargado por el soporte en el agujero perforado. Use la parte inferior del mango del martillo para empujar la clavija hacia adentro. Para remover, palanquee la clavija sacándola con un destornillador.



If a ClosetMaid® product does not give user complete satisfaction when installed in accordance with manufacturer's instructions, it will be exchanged free of charge. Only the unsatisfactory part in a multi-piece product will be exchanged.



Consumer Toll-Free Help Line  
1-800-874-0008  
(U.S.A and Canada)  
www.closetmaid.com

Manufacturer reserves the right to change specifications without notice.

Made in USA  
©ClosetMaid Corporation 2004  
Ocala, FL 34478-4400



01-84622



0 75381 06607 5